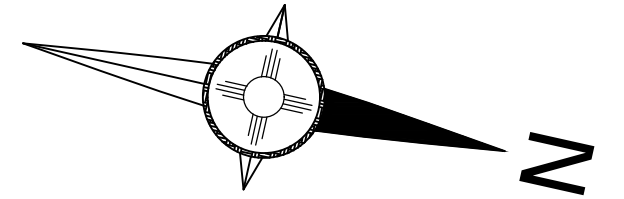




LEGEND

VENDING MACHINE

Gerald Thomas Hall -1st Floor



FACILITIES & SERVICES
 UNIVERSITY ARCHITECT & SPACE MANAGEMENT
 NEW MEXICO STATE UNIVERSITY
 LAS CRUCES, NM 88003
 PHONE # 646-7734

NAME-GERALD THOMAS HALL	DRAWN BY	DATE	NOTES
NUMBER- 244			
ADDRESS- 940 COLLEGE DR.	JD	03-04-16	AUDITED AND MADE CHANGES
YEAR BUILT- 1/1/1963	JD	09-18-17	UPDATE TITLE BLOCK
BUILDING GSF- 143562			
BUILDING NASF- 123936			
FLOOR GSF- 47232			
FLOOR NASF- 41441			

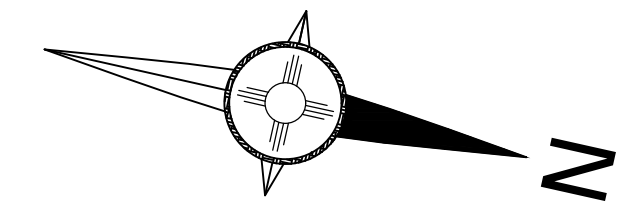
*Note: Windows and doors are displayed as references only for accurate information; consult the construction documents.

Room numbers used in this drawing reflect actual room markings where available. Unmarked rooms are assigned a number based upon surrounding room numbers. Please contact this office to coordinate all changes in room numbering.

*Note: This drawing has been prepared for FACILITY AUDIT purposes and is not to architectural drawing specifications. All room dimensions and square footage data are very accurate. Please inform this office of any changes, errors or omissions to maintain accurate drawings and database information.

FLOOR:
1

SHEET:
2-5



Gerald Thomas Hall - 2nd Floor



FACILITIES & SERVICES
 UNIVERSITY ARCHITECT & SPACE MANAGEMENT
 NEW MEXICO STATE UNIVERSITY
 LAS CRUCES, NM 88003
 PHONE # 646-7734

NAME- GERALD THOMAS HALL	DRAWN BY	DATE	NOTES
NUMBER- 244	JD	03-04-16	AUDITED AND MADE CHANGES
ADDRESS- 940 COLLEGE DR.	RD	03-12-18	CHANGES TO SUIT 237 ADDED
YEAR BUILT- 1/1/1963			
BUILDING GSF- 143562			
BUILDING NASF- 123936			
FLOOR GSF- 44705			
FLOOR NASF- 39512			

*Note: Windows and doors are displayed as references only for accurate information; consult the construction documents.

Room numbers used in this drawing reflect actual room markings where available. Unmarked rooms are assigned a number based upon surrounding room numbers. Please contact this office to coordinate all changes in room numbering.

*Note: This drawing has been prepared for FACILITY AUDIT purposes and is not to architectural drawing specifications. All room dimensions and square footage data are very accurate. Please inform this office of any changes, errors or omissions to maintain accurate drawings and database information.

FLOOR:

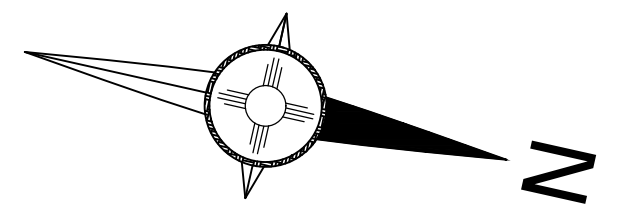
2

SHEET:

3-5



Gerald Thomas Hall - 3rd Floor



FACILITIES & SERVICES
 UNIVERSITY ARCHITECT & SPACE MANAGEMENT
 NEW MEXICO STATE UNIVERSITY
 LAS CRUCES, NM 88003
 PHONE # 646-7734

NAME-GERALD THOMAS HALL	DRAWN BY	DATE	NOTES
NUMBER- 244			
ADDRESS- 940 COLLEGE DR.	JD	03-04-16	AUDITED AND MADE CHANGES
YEAR BUILT- 1/1/1963	JD	09-18-17	UPDATE TITLE BLOCK
BUILDING GSF- 143562			
BUILDING NASF- 123936			
FLOOR GSF- 43527			
FLOOR NASF- 39298			

*Note: Windows and doors are displayed as references only for accurate information; consult the construction documents.

Room numbers used in this drawing reflect actual room markings where available. Unmarked rooms are assigned a number based upon surrounding room numbers. Please contact this office to coordinate all changes in room numbering.

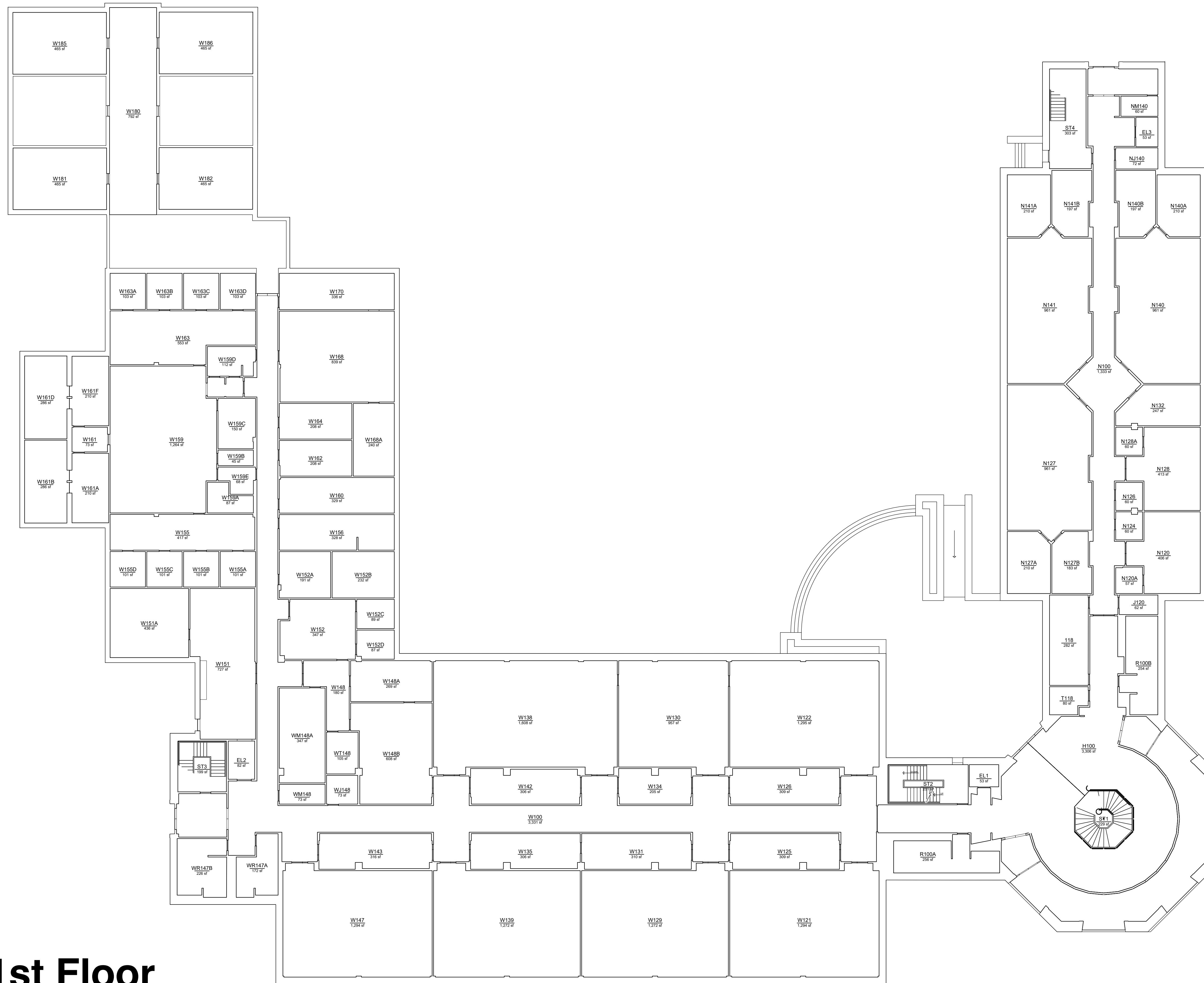
*Note: This drawing has been prepared for FACILITY AUDIT purposes and is not to architectural drawing specifications. All room dimensions and square footage data are very accurate. Please inform this office of any changes, errors or omissions to maintain accurate drawings and database information.

FLOOR:

3

SHEET:

4-5



Skeen Hall - 1st Floor



FACILITIES & SERVICES
 UNIVERSITY ARCHITECT & SPACE MANAGEMENT
 NEW MEXICO STATE UNIVERSITY
 LAS CRUCES, NM 88003
 PHONE # 646-7734

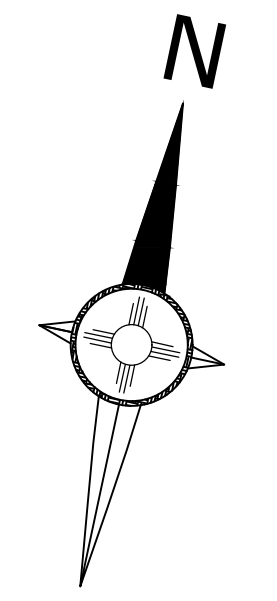
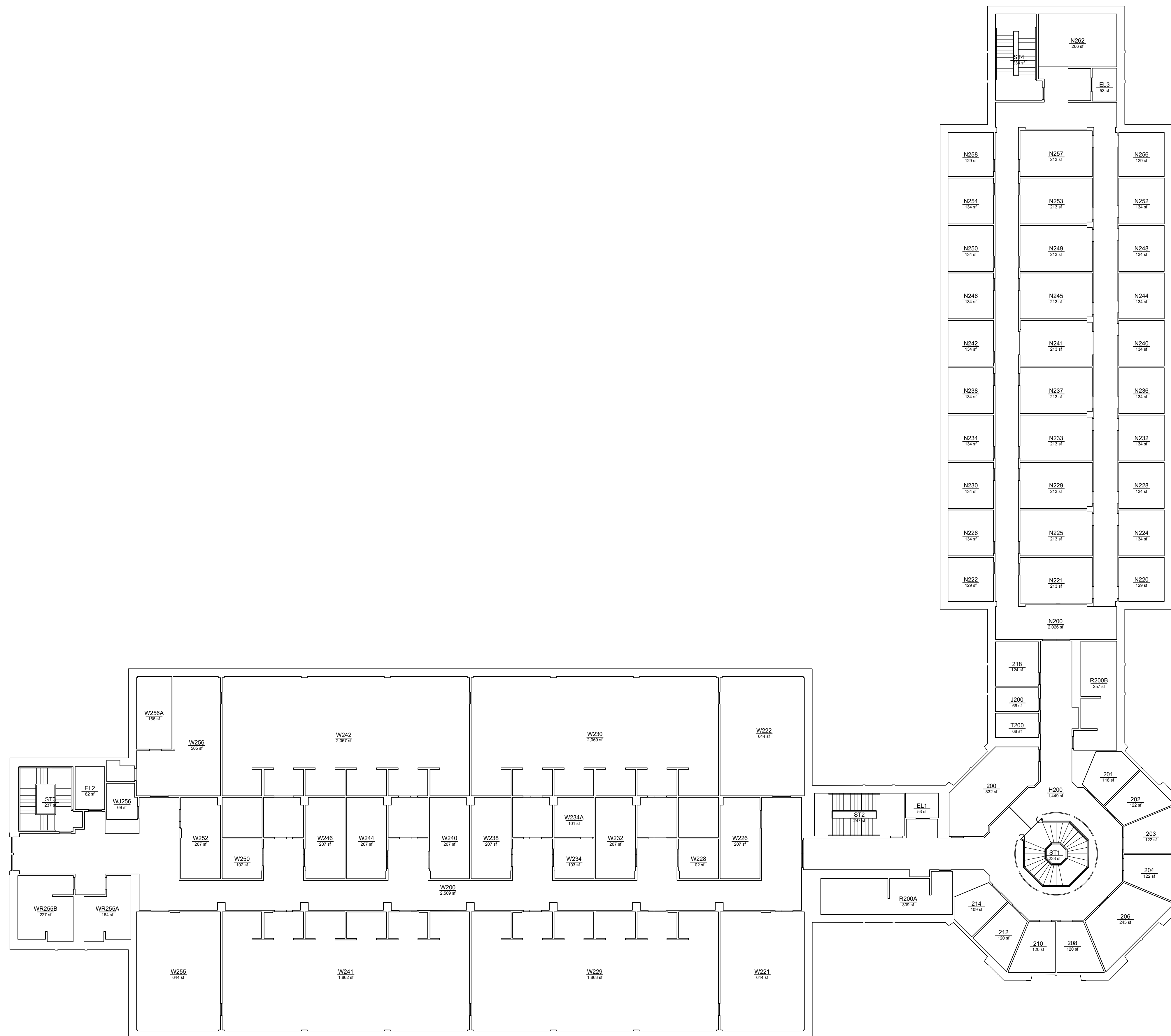
NAME-SKEEN HALL	DRAWN BY	DATE	NOTES
NUMBER- 551			
ADDRESS- 945 COLLEGE DR.	RD	10-15-14	Audited and made updates
YEAR BUILT- 1/1/1999	RD	10-03-17	Update Title Block
BUILDING GSF- 135887			
BUILDING NASF- 119207			
FLOOR GSF- 47249			
FLOOR NASF- 40531			

*Note: Windows and doors are displayed as references only for accurate information; consult the construction documents.

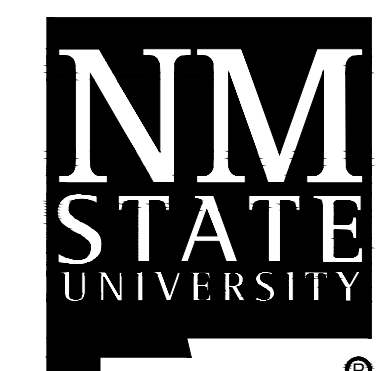
Room numbers used in this drawing reflect actual room markings where available. Unmarked rooms are assigned a number based upon surrounding room numbers. Please contact this office to coordinate all changes in room numbering.

*Note: This drawing has been prepared for FACILITY AUDIT purposes and is not to architectural drawing specifications. All room dimensions and square footage data are very accurate. Please inform this office of any changes, errors or omissions to maintain accurate drawings and database information.

FLOOR:
1
SHEET:
2-6



Skeen Hall - 2nd Floor



FACILITIES & SERVICES
 UNIVERSITY ARCHITECT & SPACE MANAGEMENT
 NEW MEXICO STATE UNIVERSITY
 LAS CRUCES, NM 88003
 PHONE # 646-7734

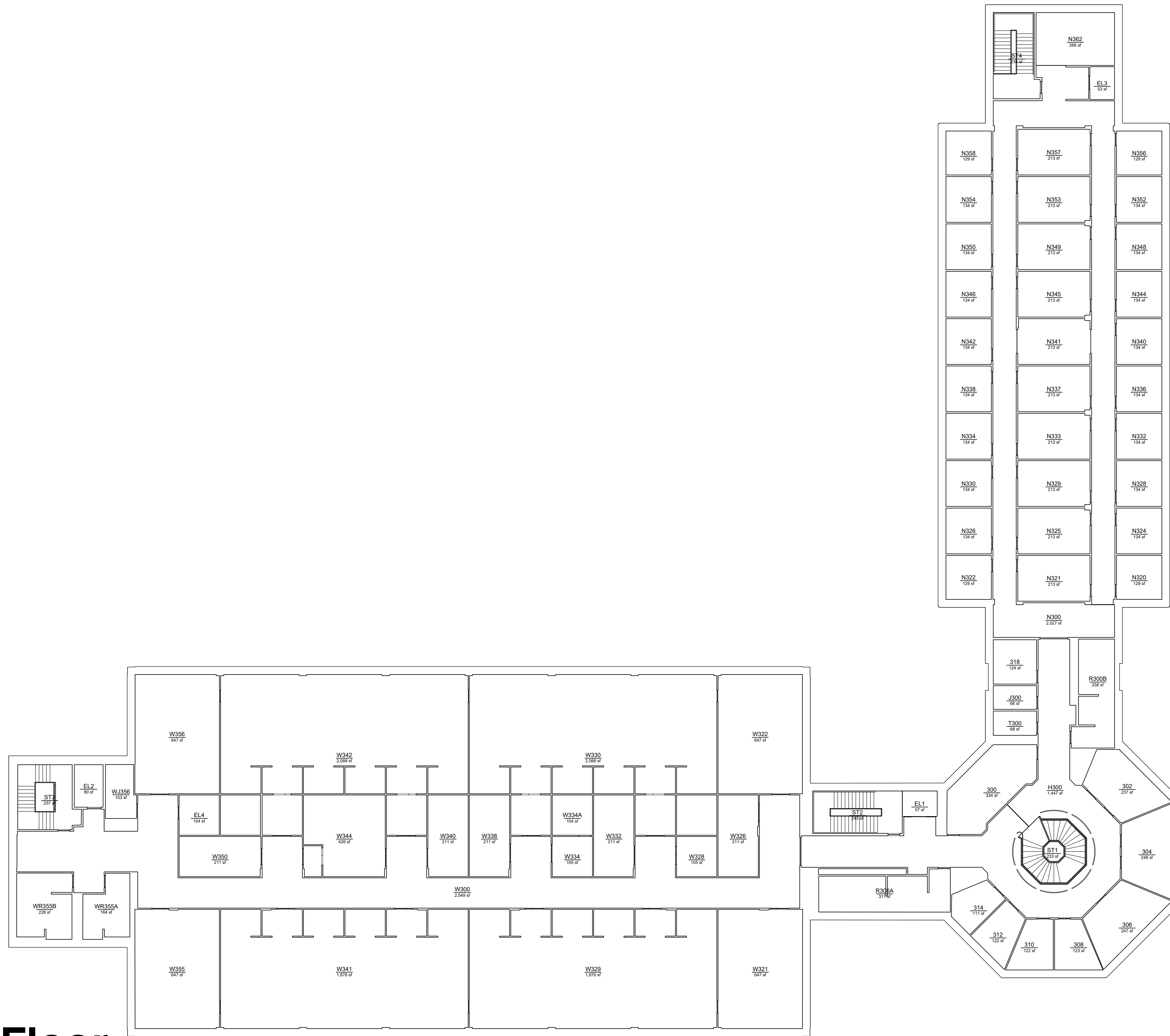
NAME- SKEEN HALL	DRAWN BY	DATE	NOTES
NUMBER- 551			
ADDRESS- 945 COLLEGE DR.	RD	10-15-14	Audited and made updates
YEAR BUILT- 1/1/1999	RD	10-03-17	Update Title Block
BUILDING GSF- 135887			
BUILDING NASF- 119207			
FLOOR GSF- 31311			
FLOOR NASF- 27314			

*Note: Windows and doors are displayed as references only for accurate information; consult the construction documents.

Room numbers used in this drawing reflect actual room markings where available. Unmarked rooms are assigned a number based upon surrounding room numbers. Please contact this office to coordinate all changes in room numbering.

*Note: This drawing has been prepared for FACILITY AUDIT purposes and is not to architectural drawing specifications. All room dimensions and square footage data are very accurate. Please inform this office of any changes, errors or omissions to maintain accurate drawings and database information.

FLOOR:	2
SHEET:	3-6



Skeen Hall - 3rd Floor



FACILITIES & SERVICES
 UNIVERSITY ARCHITECT & SPACE MANAGEMENT
 NEW MEXICO STATE UNIVERSITY
 LAS CRUCES, NM 88003
 PHONE # 646-7734

NAME- SKEEN HALL	DRAWN BY	DATE	NOTES
NUMBER- 551			
ADDRESS- 945 COLLEGE DR.	RD	10-15-14	Audited and made updates
YEAR BUILT- 1/1/1999	RD	10-03-17	Update Title Block
BUILDING GSF- 135887			
BUILDING NASF- 119207			
FLOOR GSF- 31400			
FLOOR NASF- 27499			

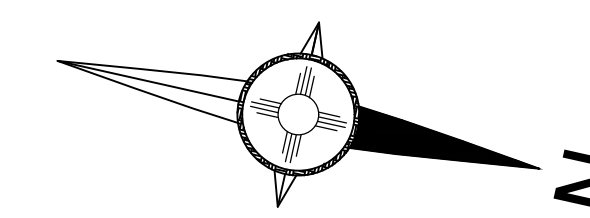
*Note: Windows and doors are displayed as references only for accurate information; consult the construction documents.

Room numbers used in this drawing reflect actual room markings where available. Unmarked rooms are assigned a number based upon surrounding room numbers. Please contact this office to coordinate all changes in room numbering.

*Note: This drawing has been prepared for FACILITY AUDIT purposes and is not to architectural drawing specifications. All room dimensions and square footage data are very accurate. Please inform this office of any changes, errors or omissions to maintain accurate drawings and database information.

FLOOR:
3
 SHEET:
4-6

Knox Hall 1st Floor



FACILITIES & SERVICES
 UNIVERSITY ARCHITECT & SPACE MANAGEMENT
 NEW MEXICO STATE UNIVERSITY
 LAS CRUCES, NM 88003
 PHONE # 646-7734

NAME-KNOX HALL	DRAWN BY	DATE	NOTES
NUMBER- 368			
ADDRESS- 2980 SOUTH ESPINA ST.	RD	09-14-15	AUDITED AND MADE CHANGES
YEAR BUILT- 1/1/1981	JD	09-26-17	UPDATE TITLE BLOCK
BUILDING GSF- 75449			
BUILDING NASF- 65416			
FLOOR GSF- 23217			
FLOOR NASF- 20076			

*Note: Windows and doors are displayed as references only for accurate information; consult the construction documents.

Room numbers used in this drawing reflect actual room markings where available. Unmarked rooms are assigned a number based upon surrounding room numbers. Please contact this office to coordinate all changes in room numbering.

*Note: This drawing has been prepared for FACILITY AUDIT purposes and is not to architectural drawing specifications. All room dimensions and square footage data are very accurate. Please inform this office of any changes, errors or omissions to maintain accurate drawings and database information.

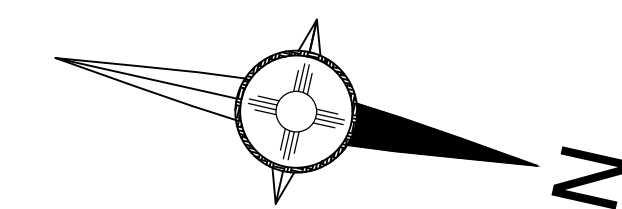
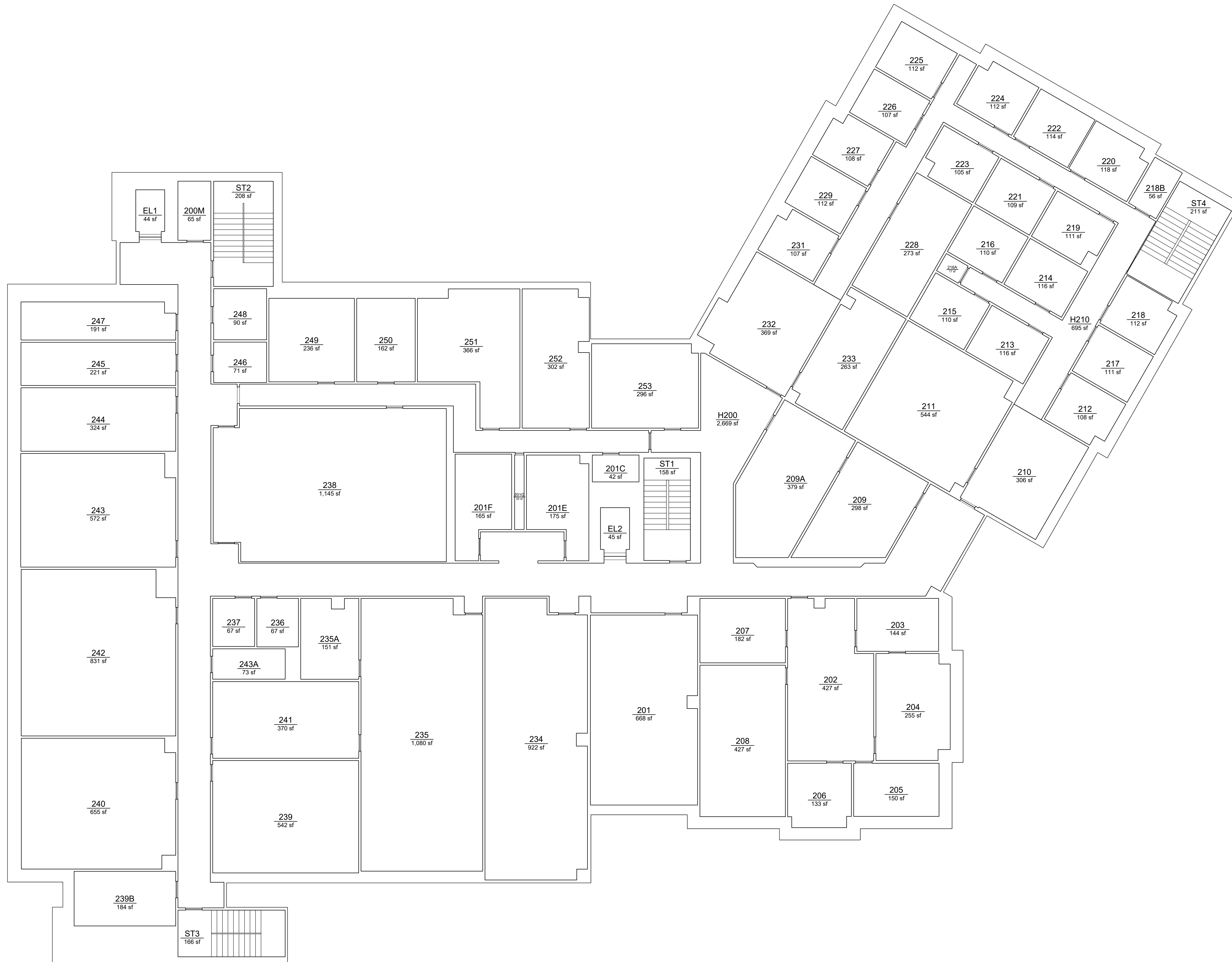
FLOOR:

1

SHEET:

2-5

Knox Hall 2nd Floor



FACILITIES & SERVICES
 UNIVERSITY ARCHITECT & SPACE MANAGEMENT
 NEW MEXICO STATE UNIVERSITY
 LAS CRUCES, NM 88003
 PHONE # 646-7734

NAME-KNOX HALL	DRAWN BY	DATE	NOTES
NUMBER- 368			
ADDRESS- 2980 SOUTH ESPINA ST.	RD	09-14-15	AUDITED AND MADE CHANGES
YEAR BUILT- 1/1/1981	JD	09-26-17	UPDATE TITLE BLOCK
BUILDING GSF- 75449			
BUILDING NASF- 65416			
FLOOR GSF- 23397			
FLOOR NASF- 20474			

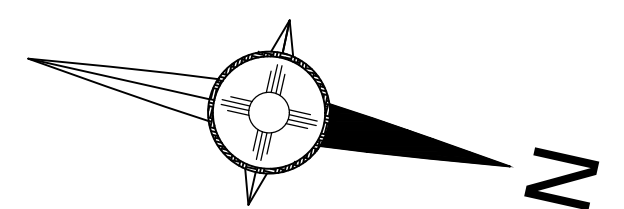
*Note: Windows and doors are displayed as references only for accurate information; consult the construction documents.

Room numbers used in this drawing reflect actual room markings where available. Unmarked rooms are assigned a number based upon surrounding room numbers. Please contact this office to coordinate all changes in room numbering.

*Note: This drawing has been prepared for FACILITY AUDIT purposes and is not to architectural drawing specifications. All room dimensions and square footage data are very accurate. Please inform this office of any changes, errors or omissions to maintain accurate drawings and database information.

FLOOR:	2
SHEET:	3-5

Knox Hall 3rd Floor



FACILITIES & SERVICES
 UNIVERSITY ARCHITECT & SPACE MANAGEMENT
 NEW MEXICO STATE UNIVERSITY
 LAS CRUCES, NM 88003
 PHONE # 646-7734

NAME-KNOX HALL	DRAWN BY	DATE	NOTES
NUMBER- 368			
ADDRESS- 2980 SOUTH ESPINA ST.	RD	09-14-15	AUDITED AND MADE CHANGES
YEAR BUILT- 1/1/1981	JD	09-26-17	UPDATE TITLE BLOCK
BUILDING GSF- 75449			
BUILDING NASF- 65416			
FLOOR GSF- 23395			
FLOOR NASF- 20304			

*Note: Windows and doors are displayed as references only for accurate information; consult the construction documents.

Room numbers used in this drawing reflect actual room markings where available. Unmarked rooms are assigned a number based upon surrounding room numbers. Please contact this office to coordinate all changes in room numbering.

*Note: This drawing has been prepared for FACILITY AUDIT purposes and is not to architectural drawing specifications. All room dimensions and square footage data are very accurate. Please inform this office of any changes, errors or omissions to maintain accurate drawings and database information.

FLOOR:	3
SHEET:	4-5